

Photoelectric Sensor with Analog Output IRS/IRN/IRD-0.5LA-GD

IRN-0.5LA/AI-GD



II 3G Ex nA IIB T4 Gc
II 3D Ex tb IIIB T135°C Dc IP67

Housing M30

- Applicable as turbidimeter with glass fibre optics Range, NTU 1 to NTU 2000
- Only applicable with fibre optics as light barrier
- With voltage or current loop output available
- Type IRD applicable in Ex Zones 1, 2, 21, 22
- Type IRN applicable in Ex Zones 2, 22

IRD-0.5LA/AI-GD



II 2G Ex d IIC T6 Gb
II 2D Ex tb IIIB T90°C Db IP67

Technical data	Type V-Out Type I-Out	IRS-U-0.5LA IRS-U-0.5LAI	IRN-0.5LA-GD IRN-0.5LAI-GD	IRD-0.5LA-GD IRD-0.5LAI-GD
Type of Ex protection Gas, at 94/9/EG		none	II 3G Ex nA IIB T4 Gc	II 2G Ex d IIC T6 Gb
Type of Ex protection Dust, at 94/9/EG		none	II 3D Ex tb IIIB T135°C Dc IP67	II 2D Ex tb IIIB T90°C Db IP67
Applicable in Ex Zones		none	2, 22	1, 2, 21, 22
Output signal range, voltage		0.05VDC - 10.5VDC(Ripple:<20mV)		
Output signal range, current		0.1mA - 21mA (Ripple:<40uA), (4mA - 20mA optional)		
Turbidity range, with fibre optic Type: MS-1000-4-L-2GD		NTU 1 to NTU 2000, distance Emitter to Receiver: 30mm, through protection glass, thickness 10mm		
Nominal output value, (adjustable) V-Out		10VDC, at NTU 1, distance Emitter to Receiver: 30mm, through protection glass, thickness 10mm		
(with fibre optic Type: MS-1000-4-L-2GD) I-Out		20mA, at NTU 1, distance Emitter to Receiver: 30mm, through protection glass, thickness 10mm		
Light source		Infrared 870nm		
Optical Beam pattern		appr. 10°		
Response time		5ms		
Supply voltage		24 VDC (20 to 28VDC)		
Current consumption		60mA		
Maximum power dissipation		1.4W		
Output type, voltage, IR.(-U)-0.5LA		PNP, output impedance appr. 25Ω, RLoad: 2kΩ to 1MΩ		
Output type, current, IR.(-U)-0.5LAI		NPN, output impedance appr. 500Ω, RLoad: 0Ω to 100Ω		
Input, only types IR.-.-DI (Disable input)		PNP compatible, Ri 10kΩ		
Housing		M30, brass, nickel plated		
Enclosure rating, at EN 60529		IP 54	IP 67	IP67
Vibration and shock resistance		Vibration: 30g over 20Hz to 2kHz. Shock: 100g for 3ms		
Working temperature range Tamb		-20°C < Tamb < +60°C	-20°C < Tamb < +50°C	-20°C < Tamb < +50°C
Connection cable		3+PE x 0,5mm ² , shielded, TPE, oil resistant, Length: 3m		
Connection cable, types IR.-.-DI		4+PE x 0,5mm ² , shielded, TPE, oil resistant, Length: 3m		
Socket, types IRS/IRN-.. S99		Lumberg, M12 male receptacle, type RSF 5 contacts		
Accessories, all types		- 2 nuts M30 (or 1 clamp on request)		
Accessories, types IRN/IRD-.-GD		- 1x Spare safety screw with packing ring for potentiometer sealing		
Accessories, types IRN-.-GD S99		- 1x Safety lock device, mount at the cable connection, for locking the connection. (black synthetic device)		
		- 1x Warning plate "Do not separate when supply voltage connected", self-sealing, for gluing on the cord set.		
		- 1x Protection cap for the sensor socket.		
Accessories, not included, for IRS/IRN-.. S99		- Cordset Lumberg RKTS 5-298/xx or RKWTH 5-298/xx		
Important accessory, not included, for all types		- Glass fibre optic type: MS-1000-4-L-2GD		
Options:		- IR.-.-DI (with disable input)		
		- IR.-.A-14: Sensors with current output 4 - 20mA		
		- Cable length up to 100m, on request		
		- IRN/IRD-0.5LA-OP: With limited optical radiant power at EN60079-28.		
		II 2(1)G Ex d [op is Ga] IIC T6 Gb, II 2(1)D Ex tb [op is Da] IIIB T100°C Db IP67		

ATEX related designations:

CE 0158

Manufacturer with address

Electrical data according to the chart

Type IRD-.-GD:



II 2G Ex d IIC T6 Gb, II 2D Ex tb IIIB T90°C Db IP67

EC certification number: BVS 10 ATEX E 130 X

Type IRN-.-GD:



II 3G Ex nA IIB T4 Gc, II 3D Ex tb IIIB T135°C Dc IP67

Declaration by manufacturer at 94/9/EC

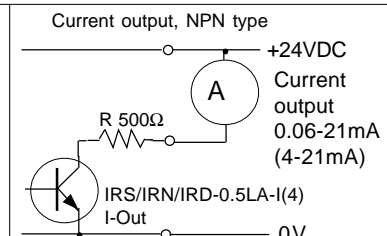
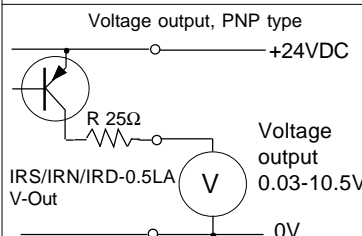
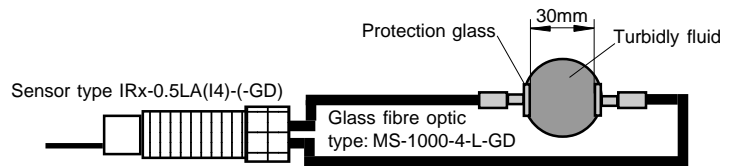
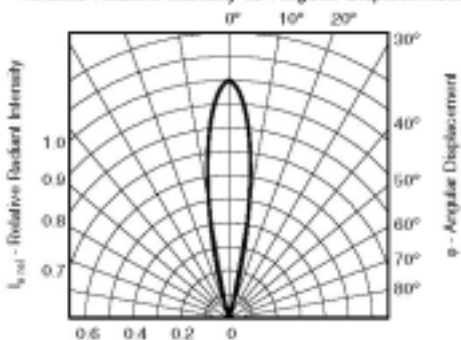
TA: -20°C < Tamb < +50°C

Date of construction: Numeral 5 to 8 of the serial number (Week/Year)

Measurement arrangement and output connection

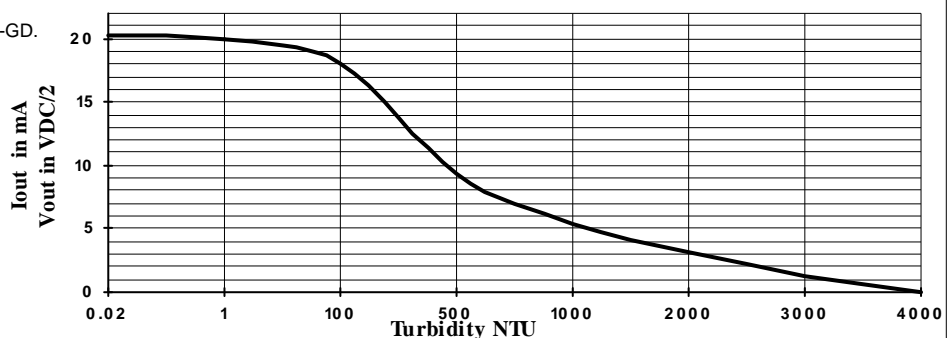
Function as light barrier with fibre optic

Relative Radiant Intensity vs. Angular Displacement

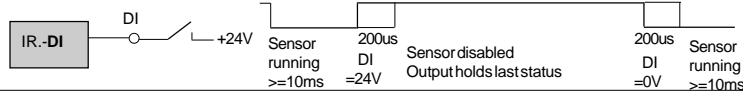


Output diagram.

With fibre optic, type MS-1000-4-L-GD.
Light beam length: 30mm.
Adjusted at NTU 1.



IR.-0.5LA-DI (Connection disable input DI)
 U_{in}: 18V-28VDC, DI=+24V=Inactive
 Reaction time: <=200us
 Hold time: >=10ms, DI = 0V=Aktiv



Dimensions, and electrical connection
 IRN/IRD-0.5LA(I/14)-GD

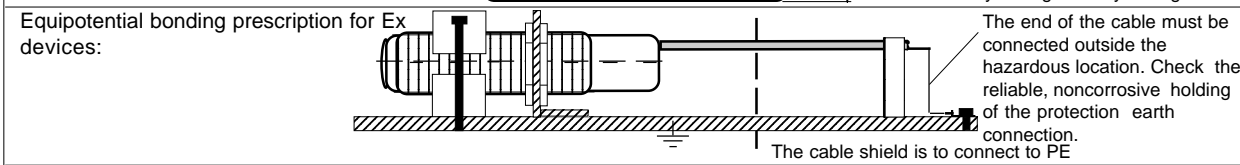
	IRN/IRD-..	IRN/IRD-...-DI
+24VDC	1	1
0V	2	2
Output	3	3
DI	--	4
PE	yellow-green	yellow-green

Dimensions, and electrical connection
 IRS/IRN-0.5LA(I/14)-(GD) S99

	IR-... S99	IR-...-DI S99
1/brown	+24VDC	+24VDC
2/white	NC	DI
3/blue	0V	0V
4/black	Output	Output
5/grey	PE	PE

Dimensions, and electrical connection
 IRS-U-0.5LA(I/14)

	IRS-..	IRS-...-DI
+24VDC	1	1
0V	2	2
Output	3	3
DI	--	4
PE	yellow-green	yellow-green



Operating Manual / EC - Declaration of Conformity:

Installation prescriptions for hazardous locations
 It is necessary to take into consideration the valid international and national rules and regulations (EN 60079-14). The local equipotential bonding have to be done. The protective earth (PE) is solid connected with the housing. The cable have to be installed and protected against damages. The cable with termination fittings, or in cable tray systems and installed in a manner to avoid tensile stress at the termination fittings. To connect cables inside hazardous locations only use certificated Ex housings. All cable terminals must be connected outside hazardous locations. Other than original manufacturer, additional optical lenses are not allowed in hazardous locations. In Ex zones 21 and 22, do not operate the sensors without fixed dustproof sealing crew. After adjust the potentiometer, the dustproof sealing crew with undamaged packing ring, must be screwed down. Damaged or lost screws or packing rings must be replaced.

Type IRD-0.5LA(I/14)-GD: Only applicable in Ex Zones 1, 2 and 21, 22.

Type IRN-0.5LA(I/14)-GD: Only applicable for the Ex zones 2 and 22.

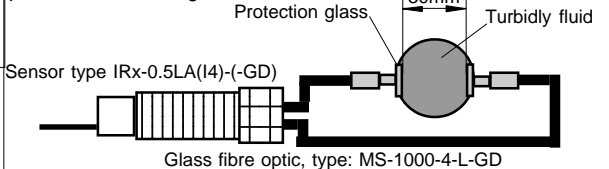
The maximum input voltage U_m=30VDC must not be exceeded.

Type IRN-0.5LA(I/14)-GD: Only applicable for the Ex zones 2 and 22. Do not separate the connector when the supply voltage is connected to the cable. When installing the sensor, the safety lock device must be fitted at the cable connector. The additional adhesive warning label must be fixed to the connector housing at the connection cable. Lumberg cordsets RKTS 5-298/xx (Straight type) RKWTH 5-298/xx (Right angle type), are allowed ONLY. It is necessary to take into consideration the mounting prescription of the connector manufacturer. In dusty locations, the protection cap for the sensor socket must be fitted, when no connection cable is connected. The maximum input voltage U_m=30VDC must not be exceeded.

General mounting prescriptions:
 Do not exceed the maximum ratings. The electrical connections must be exactly as shown in the connection diagram. The cable shield must be connected short. The cable shield should be connected to the protection earth, large-surfaced. Connection cables must not be installed parallel to high voltage cables.

Function
 Corresponding to the quantity of detected light, the output of the sensor generates an analog output signal. The output generates a voltage signal from 0.03V to 10.5VDC or a current loop, 0.06 or 4mA to 21mA. Please check the permissible load for the two different types of outputs. The photoelectric analog sensor can only be operated with fibre optics, function as light barrier.
 For turbidity measurement the arrangement (see page 1) must be observed.

For a safe function the output is to adjust at 20mA with the potentiometer, using formazine 1NTU.



Sensors with disable input, types IR-...-DI:
 If several sensors are installed close to another, it is necessary to use sensors with disable input. By using the disable input DI, each sensor can be controlled in a short reaction time. If only one sensor is activated in the same time, a mutual influence is precluded. The response time of the DI-input is 200us.

DI= 0V or not connected = emitter enabled
 DI= High (24VDC) = emitter disabled

For a correct function the sensor must be enabled for at minimum >= 10ms (DI=0V). If the DI input will be disabled, the outputs holds the previous output status from the last enabled time. The DI input is PNP compatible.

Fibre optics
 The photoelectric analog sensor can only be operated with the glass fibre optic MS-1000-4-L-GD (light barrier function) or similar Matrix Elektronik AG products.

Maintenance
 Protect the sensor and the fibre optics against pollution. If the fibre optics or the sensor lenses are contaminated, clean with alcohol. Do not use aggressive solvents. Optical fibres can be destroyed by strong solvents. Equipment must only be repaired or serviced by the manufacturer.

General safety instructions:
 "WARNING - EXPLOSION HAZARD - WHEN IN HAZARDOUS LOCATIONS, TURN OFF POWER BEFORE REPLACING OR WIRING MODULES. DO NOT DISCONNECT EQUIPMENT UNLESS POWER HAS BEEN SWITCHED OFF OR THE AREA IS KNOWN TO BE NONHAZARDOUS". The mounting of the sensor in dusty locations without fixed cordset or protection cap results in a high ignition risk. The sensors must not be used for Accident-Prevention! In worst case the output can change to any state! When installing and operating with the sensor, it is necessary to take into consideration the relevant international and other national regulations:

EN 60079-14, ATEX 118a, single directive 1999/92/EC.
 The sensor and the fibre optic are conform to the following standards: EN 60079-0:2009, EN 60079-1:2007, EN 60079-15:2010, EN 60079-31:2010, EN 60825-1:2006, EN 60825-2:2004; EN 60529; EN 61000-4-2 to EN 61000-4-6, EN 61000-6-1/-2, EN 61000-6-4. Ex protection: 94/9/EC (ATEX 100a), Machine directive: 2006/42/EC, EMC: 2004/108/EC, RoHS: 2002/95/EC.

General Notes, disposal
 We reserve the right to modify our equipment. Our equipment is designed such way, that it has the least possible adverse effect on the environment. It neither emit or contain any damaging or siliconized substances and use a minimum of energy and resources. No longer usable or irreparable units must be disposed of in accordance with local waste disposal regulations.

EC-Declaration of conformity
 Model IRD: EC-Certification No. BVS 10 ATEX E 130 X. DEKRA.
 Model IRN: Declaration by manufacturer at 94/9/EC
 ATEX certification of quality type production of Ex devices at the directive 94/9/EC Certification No: BVS 03 ATEX ZQS / E118. The conformity of the devices with the EC standards and directives and the EC-type examination certificate and the observation of the Quality Safety System ISO 9001:2008 with the ATEX module "Production", declares:

Hans Bracher, Matrix Elektronik AG

Tippkemper - Matrix GmbH
 Meeger Str. 43 D-51491 Overath
 Tel.: +49 2206 9566-0 Fax -19
 info@tippkemper-matrix.com

Matrix Elektronik AG (Manufacturer)
 Kirchweg 24 CH-5420 Ehrendingen
 Tel.: +41 56 20400-20 Fax -29
 info@matrix-elektronik.com